



CHREZO

MODÉLISME FERROVIAIRE

NEWSLETTER N° 31- September 2022, 20th

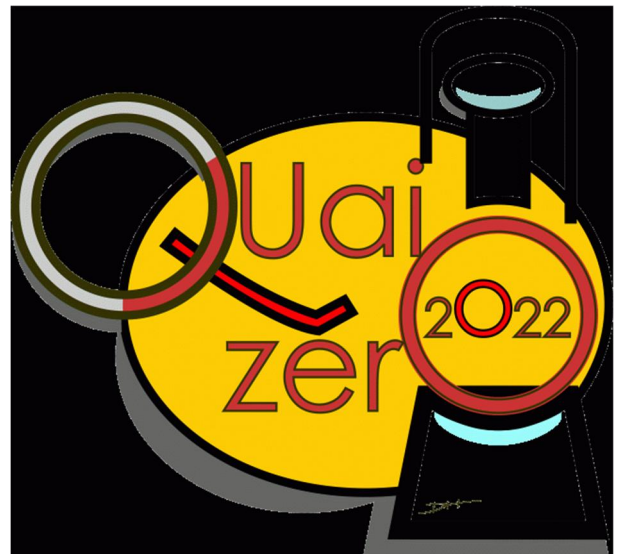
See you at Quai Zéro!

Dear Customer,

The 2022 Quai Zéro event is an opportunity to reconnect with the pleasure of meeting our customers during a live exhibition, and we will welcome you on stand P010. We also wish a happy birthday to the Cercle du Zéro, which is celebrating its forty years of existence.

In the following pages, you will find informations about the X3800 "Picasso" project and the main releases expected for the coming months.

We wish you a pleasant reading of this Newsletter and we hope to meet you in Chatellerault on September 24 and 25!



140C LOCOMOTIVES DELIVERY

95% subscribers have been delivered and we are very honored by the various comments received or left by amateurs on the Portail du Zéro. If you are one of the few supporters who have not yet received the fruit of their participation, do not hesitate to contact by phone 00 33 6.70.79.88.20 or by email (112chrezo@orange.fr) to plan together the terms of delivery that suit you. However, we specify that CHREZO will not stay at Rail-Expo in November in Dreux, nor at Trainsmania in May 2023 in Lille, which has been cancelled.

A third of the models delivered were via storefront retailers and we would like to thank them for their involvement.

At Quai Zéro, we will be able to give you free of charge real coal to be crushed and sieved by you to load the hood of your tender, corrected running number plates for the 140C70 and 140C362, a connector for your ESU smoke generator or even a static Berliet shunter if you are a subscriber and have not yet received it. You can also purchase a new 140C and avoid the vagaries of postal handling...

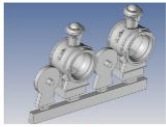
If you are still hesitating, don't wait too long, some references will soon be sold out!



CHREZO
By JOEL RACCOHAERT

Vous trouverez dans cette boutique SHAPeways les principales pièces détachées pour nos productions à l'échelle Zéno.

SEND MESSAGE



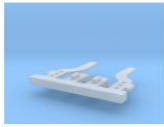
Lanterne Avenir 140C - CHREZO

\$12.40



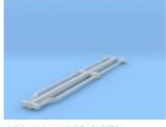
Lanterne Tender 140C - CHREZO

\$12.20



Châssis-pierre loco-tender 140C...

\$15.20



Main monitor avnt 140C - CHREZO

\$12.20



Support Devote à Droite

\$12.20



Arceau Devant OUEST - Latton

\$10.20



Arceau Devant EST - Latton

\$10.20



Marchepieds 140C - CHREZO

\$12.20



Boules de tender 140C CHREZO

\$15.20

We are pleased to announce the opening of a CHREZO shop on the well-known SHAPWAYS 3D printing site:

<https://www.shapeways.com/shops/chrezo>

You will find there the main parts likely to be lost or broken during the use of your model: whistle, locomotive steps, stone guard, cabin handrails...

Generally available in printed plastic or brass, the parts have been taken from the 140C design drawings and are 100% dimensionally compatible with your model. In addition, some parts such as the tender's safety arches have been improved and refined.

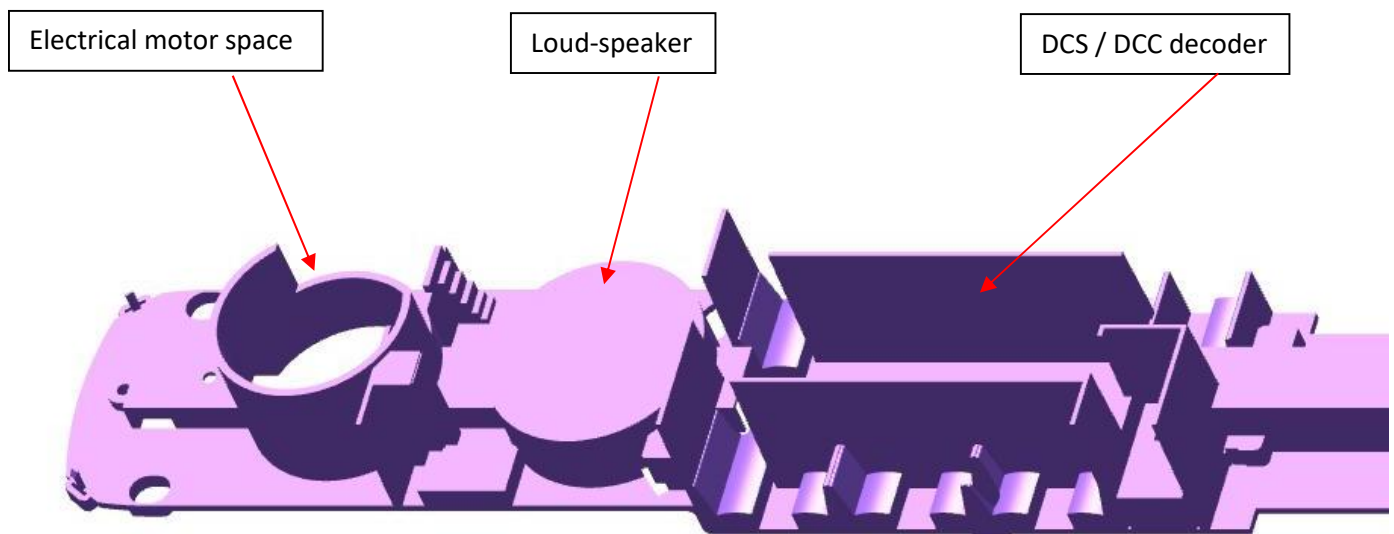
The service is chargeable and the parts are generally delivered to you within 1 week. Due to the high cost of shipping, we recommend that you try to group your orders between amateurs or with accessories offered in 3D printing by other craftsmen.

X3800 « PICASSO » RAILCAR PROJECT

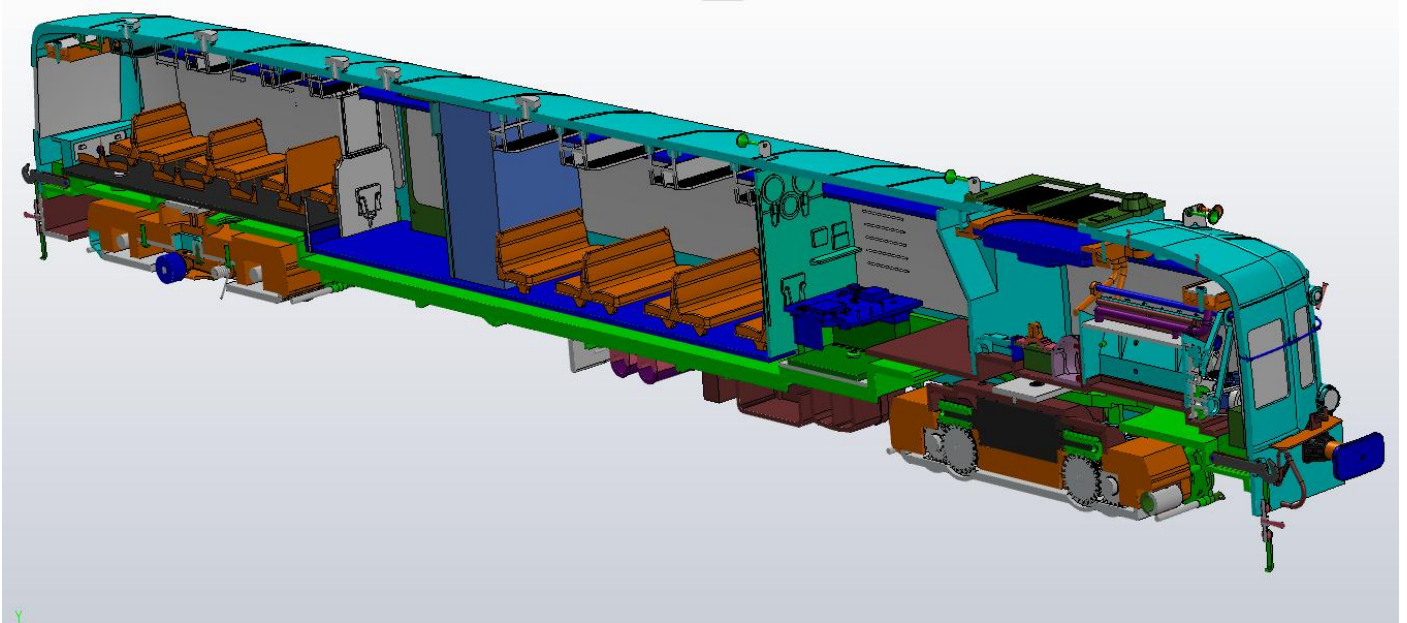
Many of you ask us about the outcoming date of this project launched as subscription in the summer of 2020.

The 3D drawings are completed and we have not yet launched the manufacture of the tools because we still have to sell a few 140Cs to finance them. At this stage, inevitably, we must address the delicate subject of the cost of manufacture which has considerably increased in recent months...

First of all, the initial quotation was carried out on the basis of the MTH study that we had acquired shortly after the launch of the subscription. If the purchase of these files saved us a lot of time, the design was based on the strict application of the standardization policy of the famous company: powered truck with vertical motor surmounted by a flywheel, large loudspeaker located in the luggage compartment, huge decoder installed in the passenger compartment and hidden by partitions... the view below shows the plastic injection part which featured the interior fittings in the 2016 project:



We considered that this design was more “Toy” than a “modelist” product, particularly considering a completely glazed from one end to the other engine, and we completely reworked the interior layout with our partner HELIXON: smaller electrical motor horizontally integrated in the truck, Loud-speaker located under the radiator grille, ESU type L decoder located in the luggage compartment floor. We have also improved the rendering of the Renault engine and the passenger compartment which is very detailed with a lowered floor, added seats and luggage baskets:



Longitudinal cut of our “Picasso” railcar.

A first consequence of this model’s evolution is the substantial increase in the number of required parts, and therefore the number of tools to be machined. This matter alone has increased by 25% in the new project.

The second unfavorable factor is linked to the international economic context, which is reflected in a general increase in the price of raw materials (metals, injection molding plastic, electronic components).

Finally, the exchange rate with the EURO has gone from 1.2 USD at the end of 2020 to 1 USD=1EUR today. As we pay our Chinese supplier in USD, the invoices we pay to him have therefore mechanically increased by 20%.

The combination of these 3 factors leads to an increase in the production cost of our X 3800 model, which makes it unrealistic to maintain the subscription price at €400.00 or €500.00 including VAT (depending on the reservation date). We are sincerely sorry but such a decision would seriously fragelize our business. In order to compensate for these additional costs, we will therefore ask our bookers for an additional €200.00, **but payable only at the time of product delivery**, which we expect in 2023.

If this increase does not suit you, we understand it and suggest you 2 solutions:

- Either the full refund of your X3800 subscription by check or bank transfer for the foreign customers,
- Either the delivery of a new analog 140C locomotive as a replacement at the price of €700.00 including VAT, subject to the additional payment of the difference with your payment when subscribing to the X3800.

We hope that these explanations seem clear and sincere to you, and that the proposed solutions will allow those who wish to terminate their subscription under fair and balanced conditions.

Now let’s review other more advanced projects!

LET US TAKE THE BASTILLE LINE !

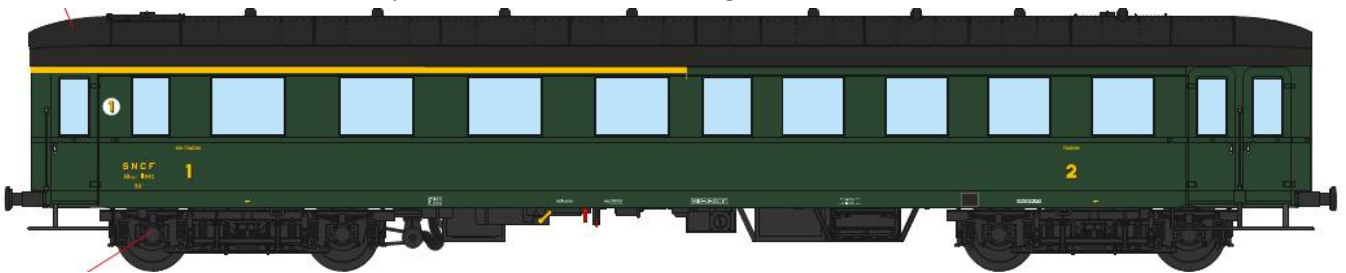


The Paris to Verneuil l'Etang suburban line occupies a special place in the hearts of many model railways fans, both for its infrastructure (Bastille place station, Avenue Daumesnil arches, Nogent's Shed, etc.) and for its rolling stock. Until 1965, the most common composition included a 131 TB (Trans-Europ kit in Gauge Zéro) then a 141 TB, pulling a short train including 4 German omnibus cars incorporated in 1945, and a 3 axles luggage car from the former Alsace-Lorraine company.

Since last June, the German firm MBW has been offering the two types of cars needed to set up a coupling: mixed 1/2nd class + 2nd class. Identified in Germany under the type E36 (Eilzugwagen -car for omnibus train- 1936), the models are in injected plastic and reduced at 1/45 scale, with digitally controlled lighting.



Unfortunately, they are equipped with modern features such as diaphragms or electric heating cables, which did not exist when the real cars were incorporated into the SNCF rolling stock in 1945.

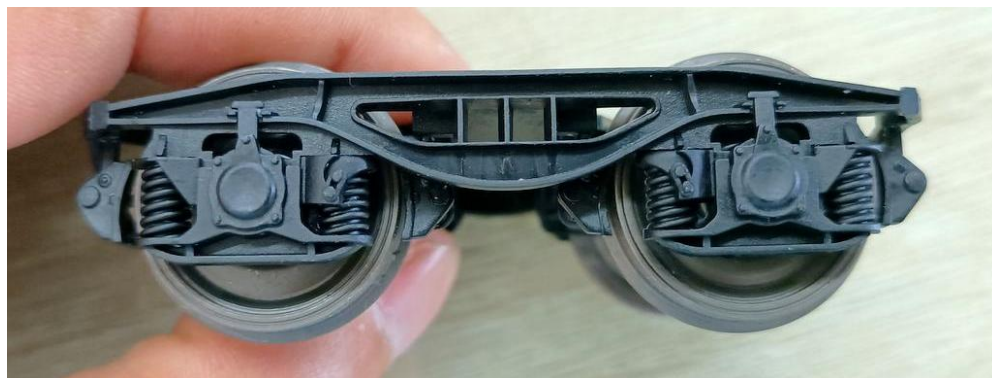


We therefore offer you a unique opportunity to purchase these cars according to two formulas:

- Set of 2 cars in SNCF livery, called "Bastille" cars with removal of diaphragms and cables, 1956-1965 painting and markings, produced by Kiss Modellbahn Service, at the price of **€1099.00** including VAT per coupling (1 mixed ½ classes and 1 2nd class car). If there is sufficient request (>10 couplings), we can offer 2 variants of couplings with different registration numbers, which will make it possible to create a varied train.
- Set of 2 cars in East German railways (DR) era 4 version which has the advantage of being painted in RAL 6007 (close to SNCF 306 green), it is up to the amateur to make the necessary modifications, at a price of **€699.00** Including VAT per set, new in the MBW genuine box.

SAMPLES YOU COULD WATCH IN QUAI ZERO

We will first present to you the "Engineering sample" of the Shimms wagon (steel coils transport car) produced by Lenz for the magazine Spur Null Magazin, which 150 pieces will be available in an SNCF Shis 50.2 version (1/45 scale):



In addition to the Shis 50.2 models, we will offer Y25c bogies for your own kitbashing and conversions.

You can also admire the prototype of the 63 m2 Deutz bogie tank wagon released at our request by SCHNELLENKAMP in the SNCF SPCC version (scale 1/45):



NEW RELEASES SCHEDULE :

All the expected dates below have been communicated to us by the manufacturers and can unfortunately be modified due to the still difficult COVID's context in China. Due to the price volatility of raw materials and the USD / EUR change rate, the unspecified price will be when the products are available.

LENZ : « Boîtes à tonnerre » cars - **October 2022**

1/45



41110-30

41120-30

41120-31

All the 150 pieces are booked yet (3 liveries).

SCHNELLENKAMP : bogies tank-car SPCC – **December 2022**

1/45



All the 75 pieces are booked yet – restricted quantity to one piece per customer– **190,00 €** including VAT.

LENZ : UIC covered vans SNCF Gs4-01 – **February 2023**

1/45



42245-04: SNCF K 340 689

42245-05 : SNCF K 343 274

42245-06 : SNCF 87 121 3153-3

SNM/LENZ : Steel coils transport car SNCF Shis 50.2 – **June 2023**

1/45



Only available in SNCF UIC era 4-5 letterings

DAPOL: 66036 EURO CARGO RAIL – **Août 2023**

1/43,5



Available in analogic, DCC et DCC Sound

SNCF « DR28 » Express cars

We still have a few remaining pieces of the LENZ express cars manufactured at our request for the French market (1/45 scale, Lenz or screw coupling, digitally controlled lighting, Overall length 482 mm / 437 mm):

- 1 complete and uncuttable train consisting of a luggage van and three assorted cars (**1550.00 €** incl. VAT only if picked up at Quai Zéro), ideal for forming a Dijon-Lille express train pulled your MTH 141P (1945-1956):



41252-30 Dmyp 24958

41251-30 C10 myfi 14795

41250-30 A2B6 myfi 3392

41251-31 C10 myfi 14797

- Few luggage-vans and 3rd class passengers cars are individually available (Quai Zéro special price: **390,00 €**).

Don't miss this opportunity: only 25 SNCF cars were produced per item number and they are exceptionally fine!

Some rare pieces, factory new, will be offered to you in Chatellerault:

	
Schnellenkamp : L'Air Liquide flat-car, CFL, era 4/5	Lenz : 3 axes luggage-car, SNCF, 1945-1956
	
Brawa: Ugilor tank-car, SNCF, era 3 – the last one!	Jarry : Reefer-car standard C/D STEF, SNCF, era 3 (brass)

SHOWS AND EXHIBITIONS:

Barring last-minute setbacks, we will be at “The Train Festival in the Land of Great Men” which will be held in Meursault on December 10 and 11, 2022.

Unfortunately, we will not be able to stay in Rail-Expo at the end of November in Dreux, nor in Trainsmania (cancelled).

Joël RASSCHAERT